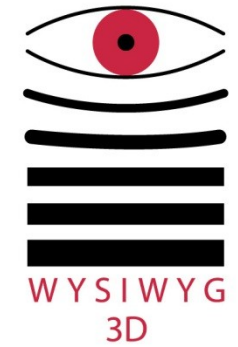
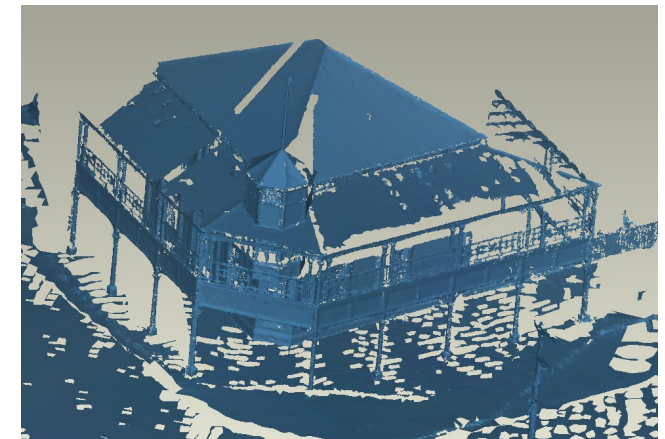
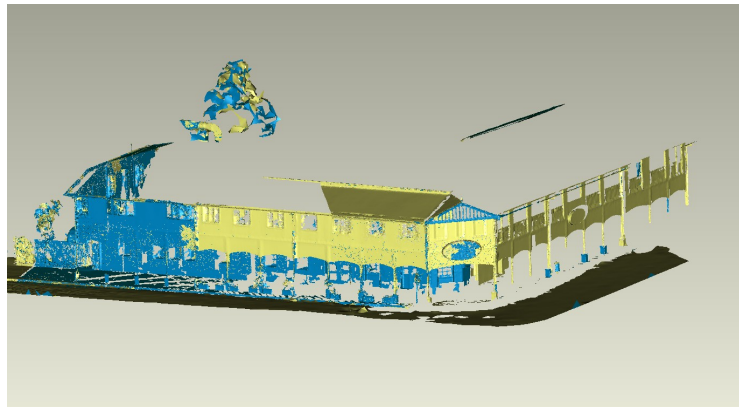


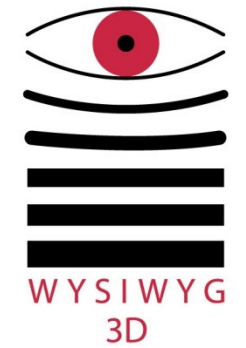
Australia



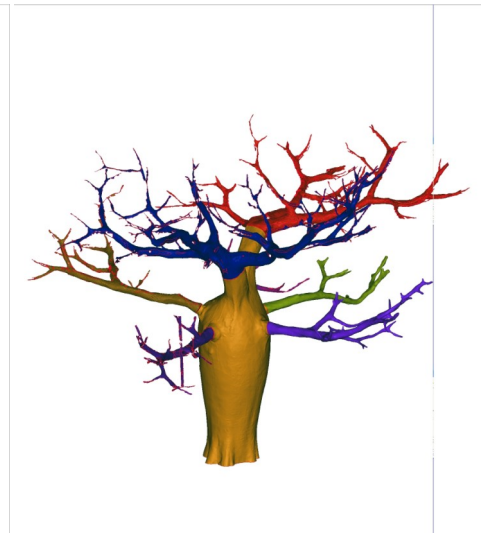
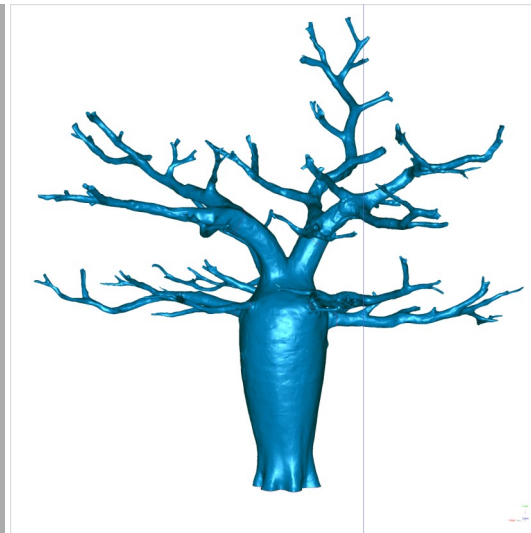
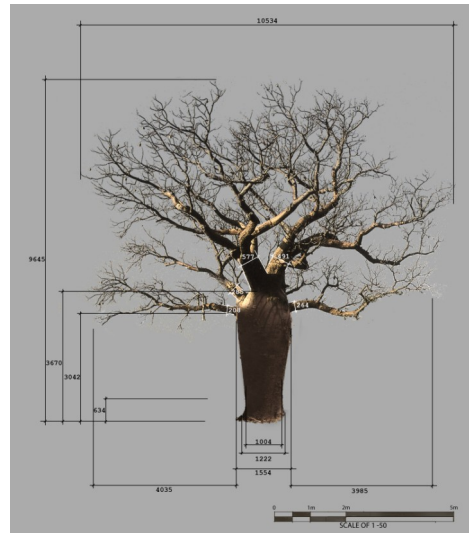
The Boab tree, Darwin Wharf, Bowen Wharf and the complete town of Bowen were the main items lidar scanned for the movie Australia. Using a combination of our portable 3d laser scanners and our terrestrial scanner Wysiwyg 3D was able to capture detailed and accurate information for pre-planning and animation purposes.



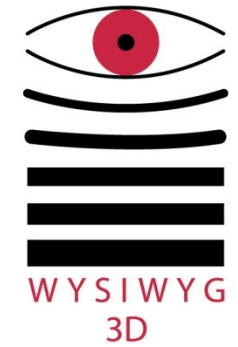
Australia



Director Baz Luhrmann wanted a Boab tree located near the house. A model was made from a real life tree which was in a hard to reach area . A clay model was made at half size then 3d laser scanned. 3D Cad model data was enlarged to its final size and machined out of Styrofoam using a 5 axis mill. Made using fibreglass with a steel centre rod the fake tree was then located on site near the main house for filming.



Australia



Filmed in Australia and set in WW1 all sets needed to be reconstructed so that they accurately represented the 1940's.

Using our terrestrial scanner Wysiwyg 3D's engineers were able to lidar scan the Darwin Wharf and the town of Bowen. Our 3d cad data formed the basis of the reconstruction work and then exported for pre-visualisation planning including the planning of camera locations.

Data can also be imported into industry standard packages such as Maya and used for animation purposes.

